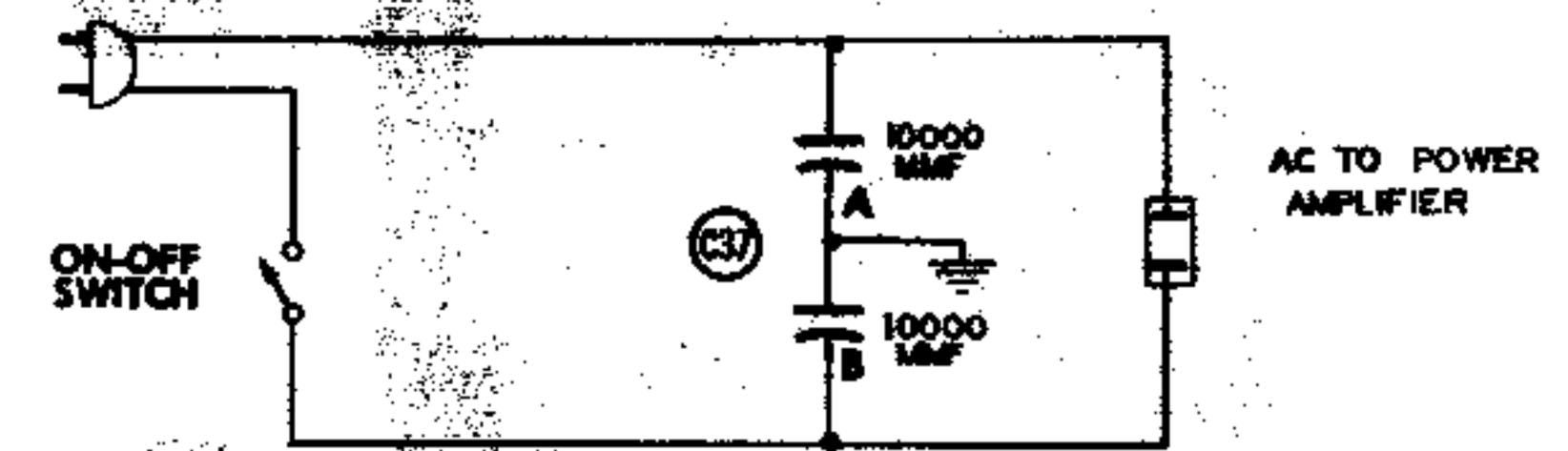


FUNCTION SELECTOR SWITCH SHOWN IN TUNER POSITION SWITCH SEQUENCE
 1- TUNER
 2- CRYSTAL INPUT
 3- LOW IMPEDANCE MIC
 4- HIGH LEVEL MAGNETIC
 5- LOW LEVEL MAGNETIC

THE COOPERATION OF THE MANUFACTURER OF THIS EQUIPMENT MAKES IT POSSIBLE TO BRING YOU THIS SERVICE



RESISTANCE READINGS

Item	Tube	Pin 1	Pin 2	Pin 3	Pin 4	Pin 5	Pin 6	Pin 7	Pin 8	Pin 9
V 1	12AX7	↑310KΩ	1Meg	4.3KΩ	≈2Ω	2Ω	↑440KΩ	1Meg	1.8KΩ	≈3Ω
V 2	12AX7	↑110KΩ	↑440KΩ	330KΩ	≈2Ω	2Ω	↑110KΩ	200KΩ	100KΩ	≈3Ω
V 3	12AX7	↑440KΩ	10KΩ	1.8KΩ	≈2Ω	2Ω	↑10KΩ	100KΩ	100KΩ	≈3Ω

VOLTAGE MEASUREMENTS MADE USING 350VDC SOURCE FOR B+
 ● MEASURED FROM PIN 7 OF OUTPUT PLUG
 † MEASURED FROM PIN 4 OF OUTPUT PLUG

1. DC voltage measurements taken with vacuum tube voltmeter; AC voltages measured at 1000 ohms per volt.
2. Socket connections are shown as bottom views.
3. Measured values are from socket pin to common negative.
4. Line voltage maintained at 117 volts for voltage readings.
5. Nominal tolerance on component values makes possible a variation of ±1% in voltage and resistance readings.
6. All controls at minimum, proper output load connected.